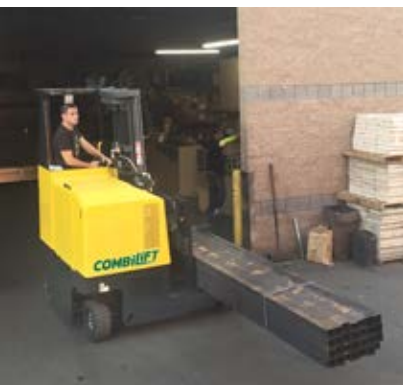


## COMBi-MR

The Combi-MR is Combilift's multi-directional stand-on reach truck which offers superb manoeuvrability and safety in the tightest working conditions.

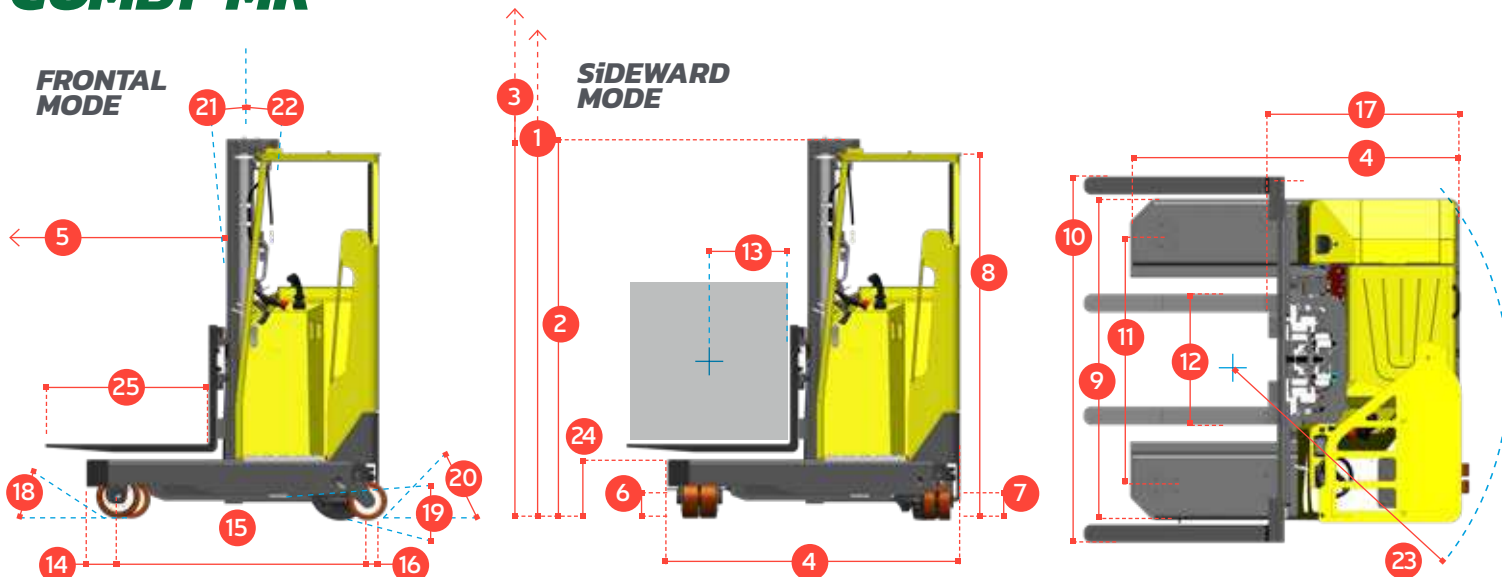
# COMBiLiFT

LIFTING INNOVATION



[combilift.com](http://combilift.com)

# COMBi-MR



This compact truck features one rear wheel drive with a large rubber tyre and 360° steering rotation. The multi-functional controlled joystick allows the operator to change direction and travel speed in a smooth seamless motion, in addition to full control of all the hydraulic functions. This contributes to faster procedures for manufacturing distribution and logistics operations.

REF.	DESCRIPTION	STANDARD	OPTIONAL
1a	Max. Lift Height	159"	218"
1b	Freelift Height	0"	58"
2	Height Mast Closed	105"	98"
3	Max. (Mast raised)	187"	257"
4	Overall Length	75"	
5	Mast Travel	34"	
6	Ground Clearance Under Mast	4"	
7	Ground Clearance to Centre of Wheelbase	4"	
8	Height Over Cab (Without work lights)	98"	
9	Overall Width	73"	
10	Width over forks	83"	
11	Track Front	57"	
12	Frame Opening	37"	
13	Load Centre Distance	24"	
14	Overhang Front	8"	
15	Wheelbase	58/64"	
16	Overhang Back	9"	
17	Length From Face of Fork	43"	
18	Approach Angle	35°	
19	Ramp Angle	15°	
20	Departure Angle	35°	
21	Forward Tilt	2°	
22	Backward Tilt	4°	
23	Minimum Outside Radius	77"	
24	Platform Height	15"	
25	Platform Length	31"	
A	Capacity	5,500 lbs	
B	Unladen Weight	11,000 lbs	
C	Maximum Ground Speed	7 mph	
D	Gradability	7%	
E	AC Rear Drive	8 HP	
F	Battery	48V x 750Ah	
G	Fork Section	2" x 4" x 45"	
H	Vulkollan Front Tyre	OD 10" / Width 3"	
I	Solid Rubber Rear Tyre	OD 16" / Width 7"	
J	Standard Colour	Yellow & Gray	

## Multi-Directional



## Features Include:

- Standing Operator Over-Head Guard
- Full Rear Protection
- Multi-Direction Operation
- AC Electric Steering
- AC Motor Technology
- Multi-Function Joystick
- Optional Integrated Hydraulic Fork Positioner

## Distributed by:

International Application No. PCT/EP2012/067238 Multi Position Tiller; GB Patent No. 2531778; International Patent Application No. PCT/EP2015/074906.

COMBILIFT HAS A POLICY OF CONTINUOUS PRODUCT DEVELOPMENT AND RESERVES THE RIGHT TO ALTER SPECIFICATIONS WITHOUT PRIOR NOTICE. SPECIFICATIONS AND/OR DIMENSIONS MAY VARY FROM THOSE ILLUSTRATED IN SOME COUNTRIES.

303 CONCORD STREET,  
GREENSBORO,  
NORTH CAROLINA 27406

TOLL FREE: 1-877 COMBI 56  
TEL: 336-378-8884  
INFO@COMBILIFT.COM

**combilift.com**