

# 600 SERIES

TELESCOPIC BOOM LIFTS



## Performance

|                                |                        |                         |
|--------------------------------|------------------------|-------------------------|
| Platform Height                |                        |                         |
| 600S                           | 59 ft 8 in.            | 18.18 m                 |
| 660SJ                          | 65 ft 8 in.            | 20.02 m                 |
| Horizontal Outreach            |                        |                         |
| 600S                           | 50 ft 2 in.            | 15.29 m                 |
| 660SJ                          | 57 ft 1 in.            | 17.40 m                 |
| Swing                          | 360° Continuous        |                         |
| Platform Capacity              |                        |                         |
| 600S Restricted/Unrestricted   | 1,000 lb/600 lb        | 454 kg/272 kg           |
| 660SJ Restricted/Unrestricted  | 750 lb/550 lb          | 340 kg/249 kg           |
| Platform Rotator               |                        |                         |
| 600S                           | 160° Hydraulic         |                         |
| 660SJ                          | 180° Hydraulic         |                         |
| Weight <sup>1</sup>            |                        |                         |
| 600S                           | 22,900 lb              | 10,387 kg               |
| 660SJ                          | 25,341 lb              | 11,494 kg               |
| Max. Ground Bearing Pressure   |                        |                         |
| 600S                           | 83 psi                 | 5.84 kg/cm <sup>2</sup> |
| 660SJ                          | 86 psi                 | 6.00 kg/cm <sup>2</sup> |
| Drive Speed 4WD                | 3.8 mph                | 6.1 km/hr               |
| Gradeability 4WD               | 45%                    |                         |
| Tilt Cut Out                   | 5°                     |                         |
| Axle Oscillation               | 8 in.                  | 0.2 m                   |
| Turning Radius, Inside/Outside |                        |                         |
| 2WS                            | 9 ft 7 in./19 ft 4 in. | 2.92 m/5.89 m           |
| 4WS                            | 5 ft 3 in./12 ft 8 in. | 1.61 m/3.87 m           |

1. Certain options or country standards increase weight

## Standard Specifications

### Power Source

|                           |         |         |
|---------------------------|---------|---------|
| Dual Fuel Engine          |         |         |
| Ford MSG425-DF            | 84 hp   | 62 kW   |
| Diesel Engine             |         |         |
| Deutz D2.9L4 Tier 4 Final | 48.8 hp | 36.4 kW |
| Fuel Tank Capacity        | 31 gal  | 117 L   |

### Hydraulic System

|                 |        |       |
|-----------------|--------|-------|
| Capacity        | 34 gal | 129 L |
| Auxiliary Power | 12V DC |       |

### Tires

|          |                         |  |
|----------|-------------------------|--|
| Standard | 355/55D625 Foam Filled  |  |
| Optional | Non Marking Foam-Filled |  |



## Standard Features

- Oscillating Axle
- Hydraulic Platform Rotator
- 110V AC Receptacle in the Platform
- 5 Degree Tilt Alarm/Indicator Light
- Swing-Out Engine Tray
- 12V DC Auxiliary Power
- Hourmeter
- SkyGuard SkyLine™
- Control ADE® System
- All Motion Alarm
- Proportional Controls
- Gull-Wing Hoods
- Platform Console Machine Status
- Light Panel\*
- Engine Distress Warning/Shutdown—
- Selectable via JLG Analyzer
- Lifting/Tie Down Lugs
- Load Sensing System

\*Provides indicator lights at platform control console for system distress, fuel level, low fuel, 5 degree tilt light and foot switch status.

## Accessories & Options

- 36 x 72 in. (0.91 x 1.83 m) Platform
- Fall Arrest Platform
- Inward Swinging Gate
- Soft Touch System
- SkySense™
- Operators Tool Tray
- Tow Package
- 43.5 lb (19.7 kg) Propane Tank
- Cold Weather Start Kit<sup>1</sup>
- Hostile Environment Kit<sup>2</sup>
- Light Package<sup>3</sup>
- Flashing Amber Beacon
- Arctic Package<sup>4</sup>
- Accessory Packages:
  - SkyWelder®
  - SkyPower®

1. Includes battery blanket, hydraulic tank heater, block heater.

2. Includes boom wipers, cylinder bellows and console cover.

3. Includes platform work lights, head and tail lights, amber beacon.

4. Includes arctic hydraulic hoses (drive, steer), main boom cable, extreme cold engine oil, fuel conditioner, engine block heater, battery blanket, glow plugs, hydraulic tank heater, oversized footswitch and arctic hydraulic oil.

Additional accessories and options available via JLG Aftermarket.

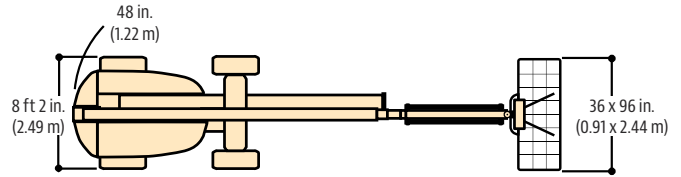
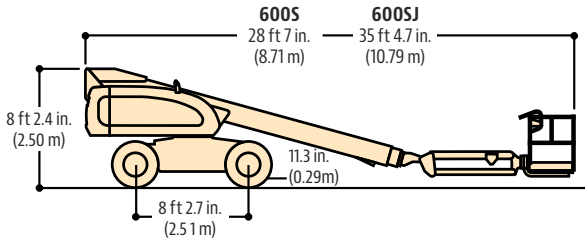
# 600 SERIES

TELESCOPIC BOOM LIFTS



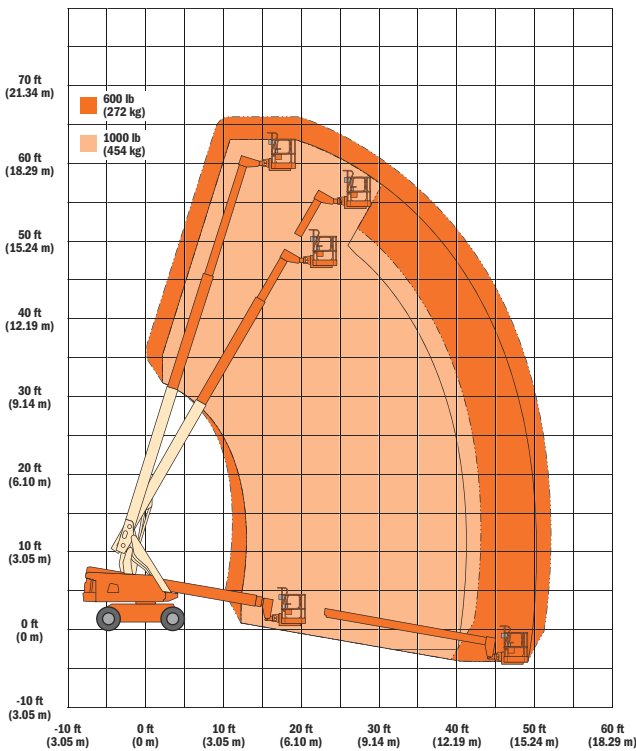
## Dimensions

All dimensions are approximate.

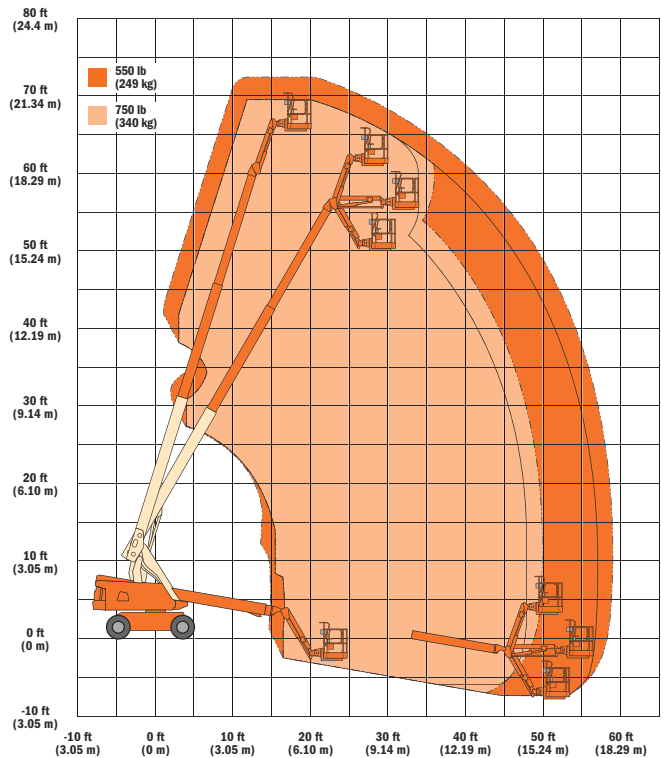


## Reach Dimensions

### 600S



### 660SJ



## The JLG "1 & 5" Warranty

We provide coverage for one (1) full year and cover all specified major structural components for five (5) years. Due to continuous product improvements, we reserve the right to make specification and/or equipment changes without prior notification. This machine meets or exceeds applicable ANSI and CSA requirements based on machine configuration as originally manufactured for intended applications. Please reference the serial number plate on the machine for additional information.

Part No.: 3131028  
R1219\_A92.20  
Printed in USA

**JLG Industries, Inc.**  
1 JLG Drive  
McConnellsburg, PA 17233-9533  
Telephone 717-485-5161  
Toll-free in US 877-JLG-LIFT  
Fax 717-485-6417  
[www.jlg.com](http://www.jlg.com)

**An Oshkosh Corporation Company**