



MINI TRACK LOADERS

MT100, MT120





SMALL IN STATURE. BIG ON PERFORMANCE.

They're not much wider than your average wheelbarrow, but don't let the small size give you the wrong idea. A Bobcat® mini track loader can do serious work. With a maximum capacity of up to 1,200 pounds, powerful engine and numerous attachments, these mighty minis can handle tilling, trenching, moving material and much more.

Tough, versatile and agile, these compact and powerful machines deliver the rugged dependability and premium performance that you expect from the Bobcat brand. Simple controls make Bobcat mini track loaders a perfect fit for less-experienced employees and seasonal help. Their smaller profile also gives you more power and versatility in tight spaces.

For landscapers, contractors and rental stores, a Bobcat mini track loader makes a productive and profitable investment.



Machine: MT100
Attachment: Industrial Grapple

MODEL OVERVIEW



Machine: MT100
Attachment: Bucket

MT100	1,000 lb.	81.0 in.	24.8 hp	36 in.	11 gpm
	Rated Operating Capacity	Lift Height	Liquid-Cooled Diesel Engine	Width (with bucket)	Auxiliary Hydraulic Flow

THE BOBCAT **MT100**

The MT100 offers significant rated operating capacity (1,000 pounds) and breakout force. Its tough undercarriage includes heat-treated rollers and idlers that extend the life of the track system and enhance durability – so you can spend more time working and less time servicing your machine.



Machine: MT120
Attachment: Bucket

MT120	1,200 lb.	88.2 in.	24.5 hp	36 in.	11.8 gpm
	Rated Operating Capacity	Lift Height	Liquid-Cooled Diesel Engine	Width (with bucket)	Auxiliary Hydraulic Flow

THE BOBCAT **MT120**

Designed with you and your challenges in mind, the MT120 offers superior lift capacity and height in a small but heavy-duty machine that's perfect for big tasks in tight spaces. With a 1,200-pound capacity, an 88.2-inch lift height, straightforward pilot controls, and a focus on durability and easy maintenance, this machine delivers reliable performance designed to go the distance.



Machine: MT100
Attachment: Bucket

GET INTO THE TIGHTEST AREAS.

With a high capacity that tackles more of the job with every cycle, Bobcat mini track loaders make a perfect addition to your fleet. At just 36 inches wide and under 87 inches long without an attachment, it can access areas that other machines can't. Squeeze through doorways or gates and work in close quarters indoors or outdoors. Rugged rubber tracks keep you going in soft, wet or muddy conditions, with minimal ground disturbance.

CONCENTRATED POWER

A Bobcat mini track loader packs a lot of power in a small package. It's the perfect solution for tight-fitting indoor and outdoor jobs where wheelbarrows and shovels are the only other option.

EASE OF USE

Bobcat mini track loaders offer an ideal combination of an easy-to-use machine in a less-intimidating size – so they're a great match for new operators, renters and seasonal help – or for anyone who needs to do big jobs in small areas.

MINIMAL GROUND DISTURBANCE

Travel over established surfaces with minimal ground disturbance and fewer surface repairs. The Bobcat MT120 has a ground pressure as low as 4.3 psi with standard tracks and 3.9 psi with wide tracks.

POWERFUL NON-DPF ENGINE

Powered by high-torque, non-DPF engines, Bobcat mini track loaders deliver plenty of muscle for the job with no time lost to regeneration.

A COMFORTABLE VIEW TO THE CUTTING EDGE

The integrated ride-on platform provides a superior vantage point to the bucket cutting edge or attachment, as well as to the sides of the machine. You can confidently operate at a natural position with less craning and straining to see the work.

LOW COST OF OWNERSHIP

Rollers and idlers are permanently sealed and lubricated to reduce undercarriage maintenance and leave more time for your jobsite tasks. The MT120 also features maintenance-free bushings in the work group, as well as a direct system with no belts for less maintenance.



Machine: MT100
Attachment: Pallet Fork



Machine: MT120



Machine: MT120
Attachment: Bucket

MT120

SMOOTH PILOT CONTROLS

Do the work with smooth, fast, precise movement that responds seamlessly to your input. The MT120 has auxiliary hydraulic controls on the work group handle for extra convenience and simplicity during attachment operation.

CLASS-LEADING LIFT HEIGHT

The MT120 offers 88.2 inches of lift height to give you extra flexibility for loading trucks and trailers or placing materials in hard-to-reach areas.

VERSATILITY



*Machine: MT100
Attachment: Snowblower*

BUILT FOR YOUR PREFERRED ATTACHMENT STYLE

Available with your choice of two attachment mounting systems, Bobcat provides the best attachment versatility in the industry to help you make quick work of grading, backfilling, digging, hauling and more.

BOB-TACH ATTACHMENT MOUNTING SYSTEM

The Bob-Tach® attachment mounting system provides a wide selection of Bobcat-built attachments for mini track loaders. Its two robust, over-center latching pins provide the fastest attachment changes in the industry – and spring-loaded, wear-compensating wedges ensure a secure fit, time after time and year after year.

ATTACHMENTS FOR BOB-TACH ATTACHMENT MOUNTING SYSTEM:

- 36-inch bucket
- 44-inch bucket
- Angle broom
- Attachment adapter plate
- Auger
- Boring unit
- Digger
- Hydraulic breaker
- Industrial grapple
- Landplane
- Log grapple
- Nitrogen breaker
- Pallet fork
- Root grapple
- Snowblower
- Soil conditioner
- Stump grinder
- Sweeper
- Tiller
- Trencher
- Utility blade
- Utility fork
- Utility grapple
- Vibratory plow

COMMON INDUSTRY INTERFACE (CII)

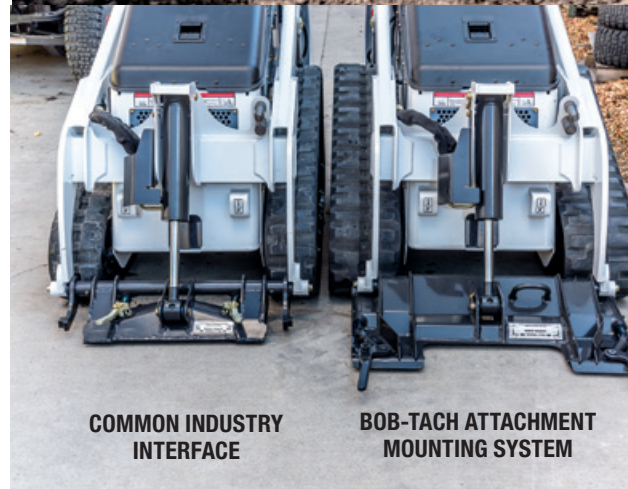
Choose the CII system for a smaller, pin-on attachment style that's common on mini track loaders but provides the same range of motion and usability as our industry-leading Bob-Tach system. The Bobcat CII system features exclusive dual over-center, 90-degree latches that make for secure and quick attachment hookup. The pin is greasable and serviceable to facilitate long product life and ease of use.

ATTACHMENTS FOR THE COMMON INDUSTRY INTERFACE:

- | | | |
|------------------------|-----------------------|---------------------|
| 36-inch GPX bucket CII | 44-inch GP bucket CII | Pallet fork CII |
| 36-inch GP bucket CII | Breaker CII frame | Trencher CII LT 113 |
| 44-inch GPX bucket CII | Model 10 auger CII | |



Machine: MT120
Attachment: Auger



COMMON INDUSTRY
INTERFACE

BOB-TACH ATTACHMENT
MOUNTING SYSTEM



Machine: MT100
Attachment: Angle Broom

CHOOSE YOUR TRACKS.



Machine: MT100

Standard narrow and optional wide tracks

Multi-bar lug tracks (standard on MT120) combine increased traction with low vibration and excellent operator comfort. These flexible, cut-resistant and anti-gouge tracks are structurally designed to match the needs of your Bobcat mini track loader. Two different track sizes provide your preferred combination of performance and ground pressure.

NARROW TRACK: UNDER 36 INCHES WIDE

Narrow tracks keep your machine's width to just 35.6 inches without an attachment. Depending on the size of your attachment, you can easily slip through doorways and fence gates. The narrow track ground pressure, as low as 4.3 psi on the MT120, provides good protection for most turf and finished surfaces.

WIDE TRACK: MINIMIZED GROUND PRESSURE, INCREASED STABILITY

The optional wide track improves stability and ride quality while reducing ground pressure to as low as 3.9 psi on the MT120 – giving you the lightest-possible footprint for sensitive surfaces – and the mini track loader is still just 42 inches wide or less without an attachment.

MODELS	C-PATTERN	MULTI-BAR LUG	MULTI-BAR LUG NON-MARKING TREAD PATTERN
MT100	7 and 9 in.	7 and 10 in.	7 and 9 in.
MT120	9 and 11 in.	9 and 11 in.	9 and 11 in.



Machine: MT120

Standard narrow and optional wide tracks

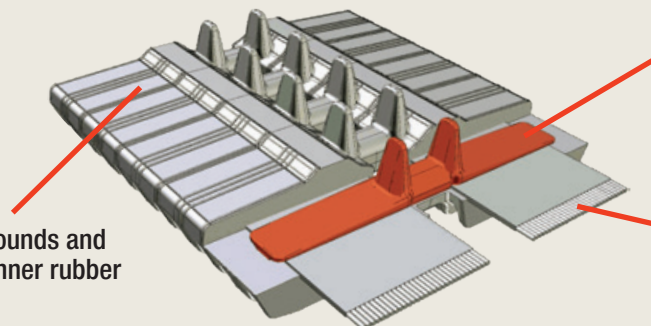


Optional non-marking multi-bar lug rubber tracks won't leave black rubber marks on hard surfaces like concrete.

TRACK STRUCTURE

Each track is structurally designed to match the needs of your Bobcat equipment.

Cut-resistant, anti-gouge rubber compounds and tough outer rubber resist wear. A soft inner rubber compound provides flexibility.



Steel imbeds (links) guide the sprocket while increasing track stability and strength.

Internal steel cables provide a strong base for the roller path while equalizing tension.

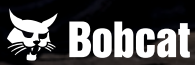
SPECIFICATIONS

MODEL		MT100	MT120
PERFORMANCE	Rated Operating Capacity (ROC) (35% of tipping load)	1000 lb. (453 kg) ¹ / 1060 lb. (480 kg) ²	1200 lb. (544 kg)
	Lift Arm Path	Radius	Vertical
	Tipping Load	2898 lb. (1314 kg)	3468 lb. (1573 kg)
	Hydraulic Pump Capacity	11.0 gpm (41.6 L/min.)	11.8 gpm (44.7 L/min.)
	Travel Speed (forward)	4.1 mph (6.6 km/hr.)	4.7 mph (7.5 km/hr.)
	Travel Speed (reverse)	2.9 mph (4.7 km/hr.)	4.7 mph (7.5 km/hr.)
	Operating Weight (with bucket)	3390 lb. (1537 kg)	3720 lb. (1687 kg)
DIMENSIONS	Length (without bucket)	84.5 in. (2145 mm)	86.8 in. (2204 mm)
	Width (with bucket and standard tracks)	36.0 in. (914 mm)	36.0 in. (914 mm)
	Width (with bucket and wide tracks)	41.1 in. (1043 mm)	44.0 in. (1117 mm)
	Height	54.6 in. (1387 mm)	57.6 in. (1463 mm)
	Height to Bucket Hinge Pin	81.0 in. (2057 mm)	88.2 in. (2239 mm)
	Reach – Fully Raised	18.6 in. (472 mm)	22.2 in. (563 mm)
ENGINE	Emissions Tier (EPA)	Tier 4	Tier 4
	Fuel/Cooling	Diesel/Liquid	Diesel/Liquid
	Cylinders	3	3
	HP/Displacement	24.8 hp (18.5 kW)/55.0 cu. in. (0.9 L)	24.5 hp (18.2 kW)/75.2 cu. in. (1.2 L)
	Fuel Tank Capacity	7.0 gal. (26.5 L)	8.1 gal. (30.6 L)
TRACKS/ UNDERCARRIAGE	Track Width – Standard	7.0 in. (180 mm)	9.1 in. (230 mm)
	Track Width – Optional	9.8 in. (248 mm)	11.0 in. (280 mm)
	Ground Pressure (with standard tracks)	5.3 psi (35.8 kPa)	4.3 psi (29.0 kPa)
	Ground Pressure (with wide tracks)	4.0 psi (27.3 kPa)	3.9 psi (27.0 kPa)
	Grease Cylinder Track Tensioning	–	Std
OPERATION	Steering and Drive	ISO Joystick	ISO Joystick
	Lift and Tilt	ISO Joystick	ISO Joystick
	Transmission	Hydrostatic Track Drive System	Hydrostatic Track Drive System
	Attachment	Single Lever With Dual Direction Detent	Fingertip Auxiliary Hydraulics Control
MACHINE FEATURES AND OPTIONS	4.3" LCD Color Display With Keyless Start, Password Protection and Service/Warning Alerts	–	Std
	Attachment Control Kit	Opt	Opt
	Attachment Mounting System Conversion Kit (convert from CII to Bob-Tach system)	Opt	Opt
	Auxiliary Hydraulics	Std	Std
	Case Drain Kit	Opt	Std
	Catalytic Exhaust Purifier	Opt	Opt
	Choice of Attachment Mounting System	Bob-Tach mounting system or common industry interface (CII) system	Bob-Tach mounting system or common industry interface (CII) system
	Counterweight	Std – Removable	Std
	Engine Angle Sensor Kit	–	Opt
	Engine Block Heater	Opt	Opt
	Hydrostatic Drive Train	Std	Std
	Lift Arm Lockout With Manual Bypass	Std	Std
	Lift Arm Support	Std	Std
	Lift Hook Locations	Std	Std
	Light Kit (Front)	Opt	Opt
	Light Kit (Rear)	–	Opt
	Liquid-Cooled Diesel Engine	Std	Std
	Multi-Bar Lug Track	Opt	Std
	Neutral Start Interlocks	Std	–
	Non-Marking Tracks	Opt	Opt
	Parking Brake	Std	Std
	Ride-On Platform	Std	Std
Spark Arrestor Muffler	Std	Std	
Tie-Down Locations	Std	Std	
Tilt Lockout	Std	Std	

¹Counterweights located in the undercarriage. ²Counterweights located in rear position.



Certain specification(s) are based on engineering calculations and are not actual measurements. Specification(s) are provided for comparison purposes only and are subject to change without notice. Specification(s) for your individual Bobcat equipment will vary based on normal variations in design, manufacturing, operating conditions, and other factors.



Bobcat Company is a member of the Doosan Group. Doosan is a global leader in construction, grounds maintenance and material handling equipment, power and water solutions, and engineering that has proudly served customers and communities for more than a century. Bobcat®, the Bobcat logo and the colors of the Bobcat machine are registered trademarks of Bobcat Company in the United States and various other countries. ©2025 Bobcat Company. All rights reserved.

BOBCAT COMPANY • 250 EAST BEATON DRIVE • WEST FARGO, ND 58078 • BOBCAT.COM

DOOSAN

B-1776 (09/25)
EP-8M-0925-19587-F